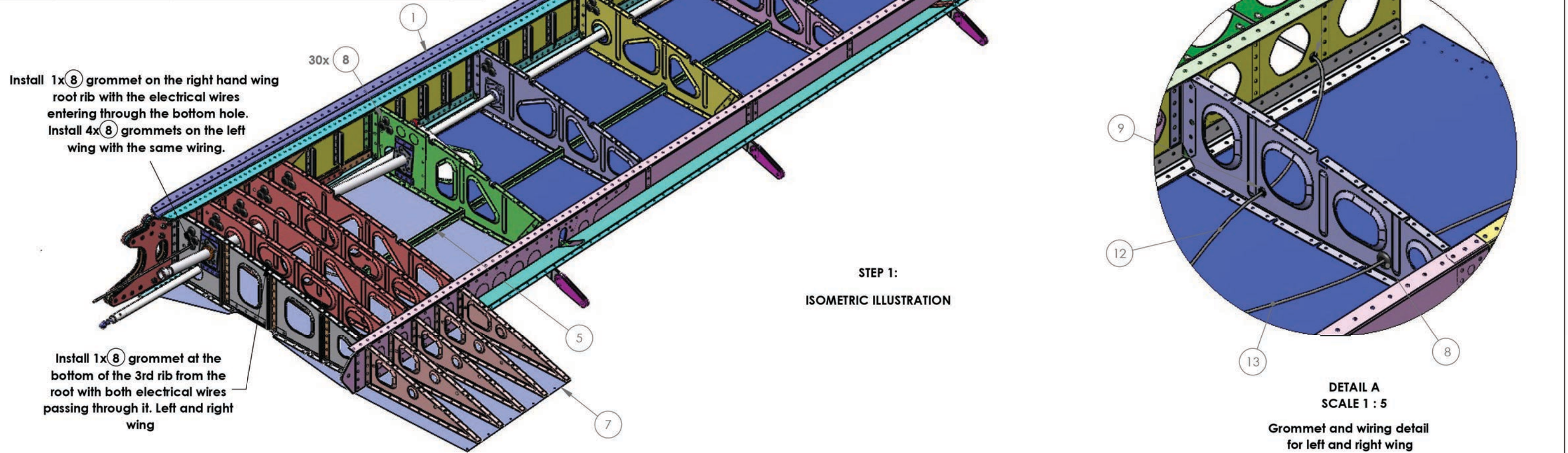


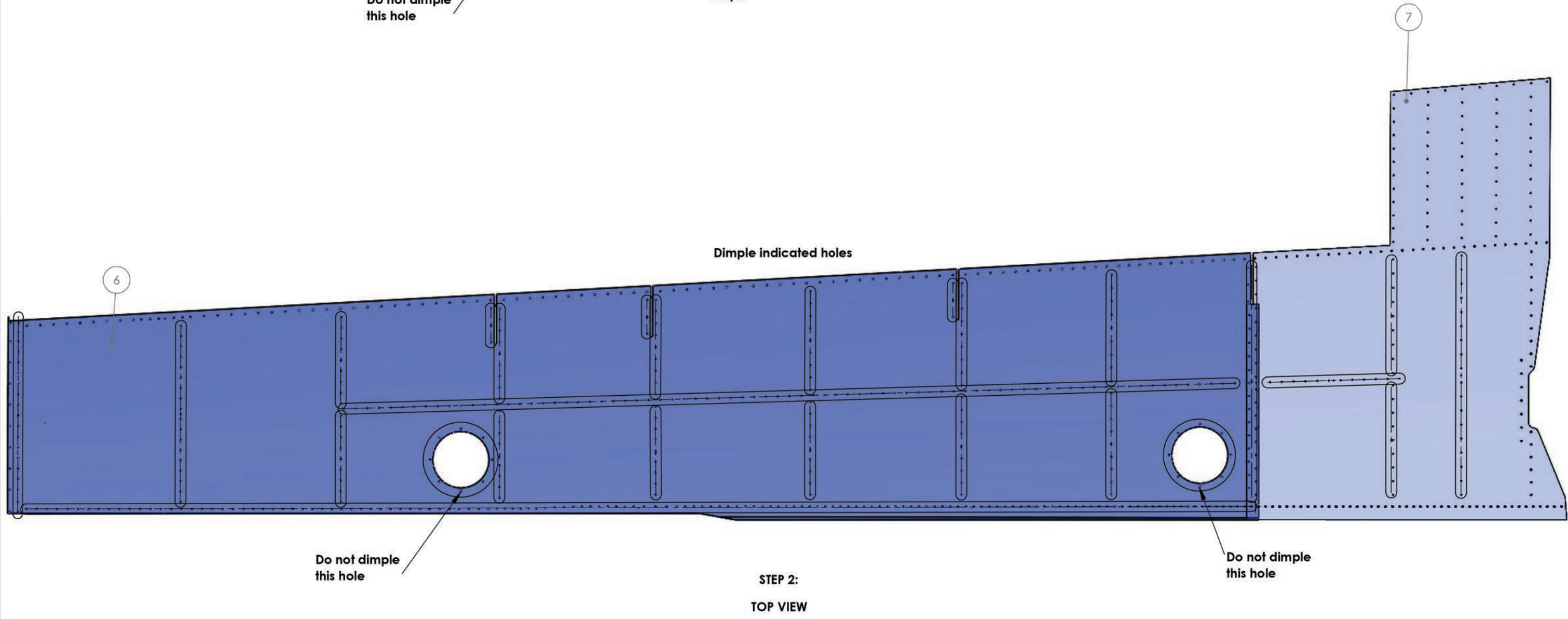
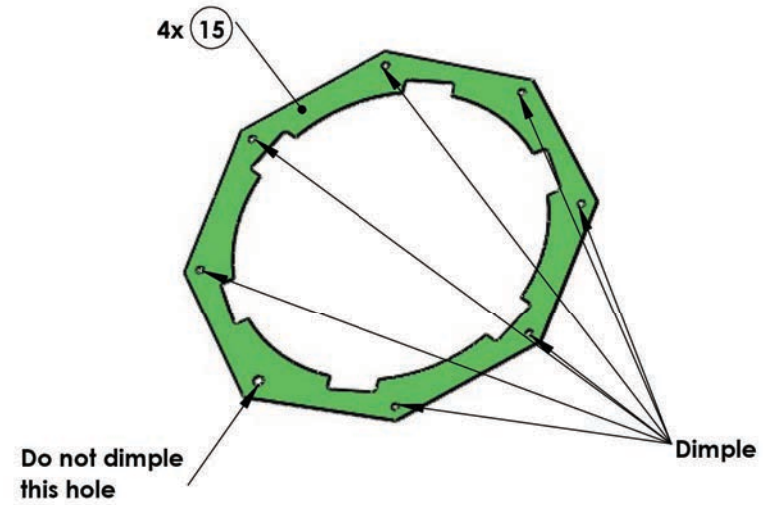
ITEM NO.	PART NUMBER	DESCRIPTION	QTY.
1	WG-ASS-004-R-F-0	Fast Wing Assembly 4 - Right	1
2	CT-ROD-S01-X-F-0	Control In-Wing Long Pushrod	1
3	CT-ROD-S02-X-F-0	Assembly - SHORT PUSHROD- Aileron IN WING	1
4	CT-ROD-S03-X-F-0	Assembly - Stick Link - Flap	1
5	WG-STR-003-R-F-0	Lower Wing Stringer - Right	1
6	WG-SKN-004-C-F-0	Wing Bottom Skin - Right	1
7	WG-SKN-003-X-F-0	Top Root Skin	1
8	HW-GRM-005-X-X-0	Grommets in 12mm and Os 20mm	30
9	HW-GRM-003-X-X-0	ID 6mm x 10mm x 13mm Grommet	2
10	HW-ANL-040-R-X-0	AN 4 Nyloc Locknut	3
11	HW-ANB-411-X-X-0	AN4 - 11A Bolt	3
12	WG-WIR-001-X-F-0	Landing Light Wire (6 Core Screen Wire)	5
13	WG-WIR-002-X-F-0	Nav Light Wire (6 Core Screen Wire)	6.5
15	WG-PLT-014-X-F-0	Inspection Hatch Grip on Plate	2
16	HW-ANW-040-X-X-0	AN4 Washer	9
17	WG-PLT-012-X-F-1	Main Spar Countersunk Reinforcement Plate 2	1
18	WG-PLT-011-X-F-1	Main Spar Countersunk Reinforcement Plate 1	1
19	EC-WIR-116-X-X-0	16 AWG Milspec Teflon Wire (per metre)	43.2
995	HW-RIV-242-X-X-1	Alu CSK Rivet 3.2x8mm	369
996	HW-RIV-253-X-X-1	Alu CSK Rivet 4x10mm	67
997	HW-RIV-142-X-X-0	Alu Domed Rivet 3.2x8mm	55
998	HW-RIV-153-X-X-0	Alu- Domed Rivet 4x10mm	151
999	HW-RIV-163-X-X-0	Alu- Domed Rivet 4.8x10mm	45
25	WG-PLT-012-X-F-1	Main Spar Countersunk Reinforcement Plate 2	1

**NOTE**  
**x4 Lengths of 5.4m 16Awg Milspec Teflon Wire (EC-WIR-116-X-X-0) to be installed into both the Left and Right Wing.**



DISTRIBUTION LIST	INSPECTION	X	APPROVAL STAMP:	NOTES :	RIGHT HAND SHOWN, LEFT HAND MANUFACTURED OPPOSITE	DRAWN:	Leon Nel	PART NUMBER:	WG-ASS-003-R-F-0	SCALE:	1:10	
	PARTS MAN.					DATE:	2019/09/17	DESCRIPTION:	Fast Wing Assembly 3 - Right	PAGE:		
	ASSEMBLY	X				DRAWING No:	WG-ASS-003-R-F-0-A-3	MATERIAL:	-	RFC No:	C0256	
	COMPOSITES					Weight [g]:	41216.22	SIZE:	A3			
	UPHOLSTERY											

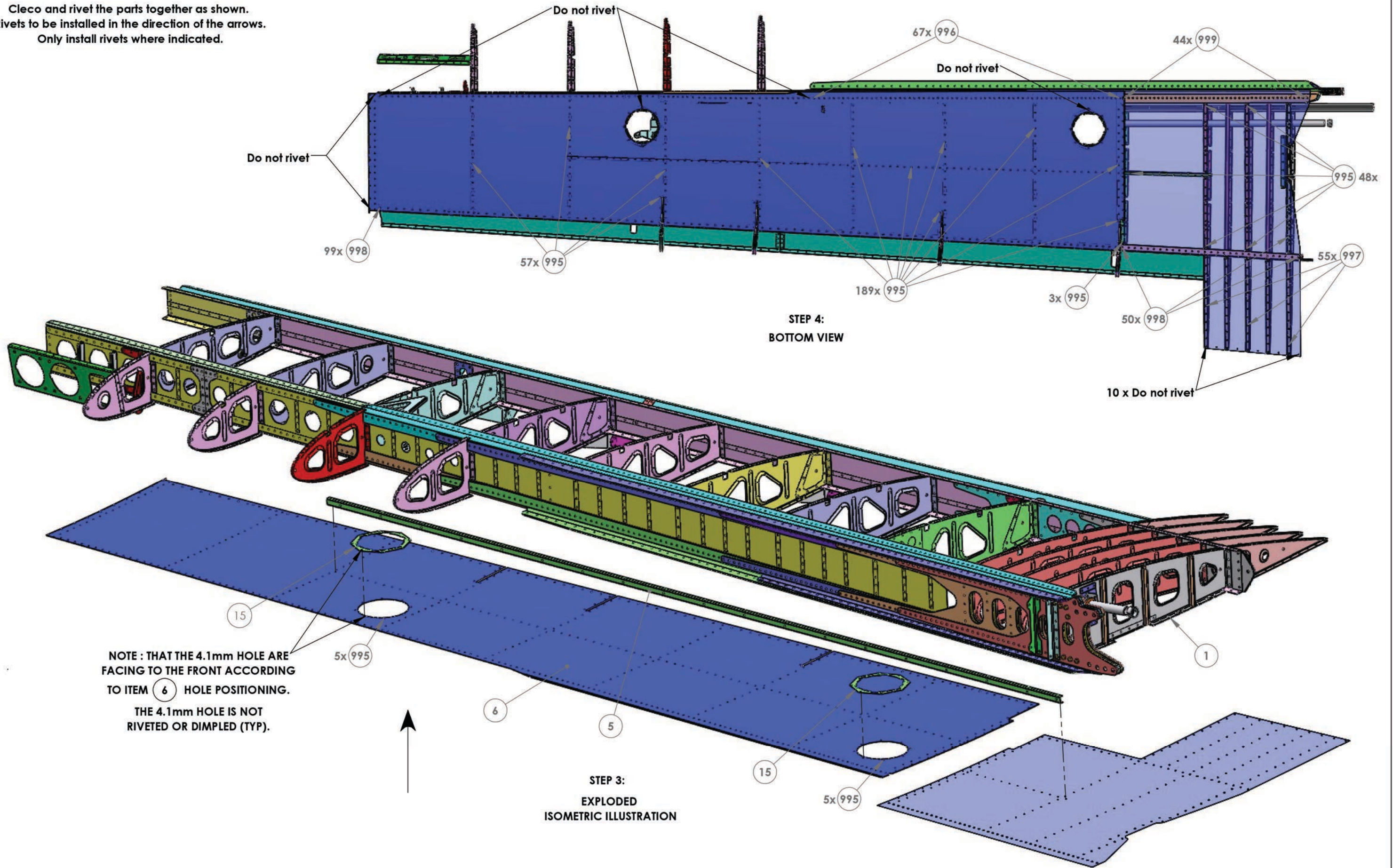
Dimple the parts as shown in the correct direction with the right size dimple and dies.



STEP 2:  
TOP VIEW

DISTRIBUTION LIST	INSPECTION	X	APPROVAL STAMP:	NOTES :	DRAWN:	Leon Nel	PART NUMBER:	WG-ASS-003-R-F-0	SCALE:	1:10			
	PARTS MAN.				DATE:	2019/09/17	DESCRIPTION:	Fast Wing Assembly 3 - Right		PAGE:			
	ASSEMBLY	X			DRAWING No:	WG-ASS-003-R-F-0-A-3	MATERIAL:	-	RFC No:	C0256		SIZE:	A3
	COMPOSITES				Weight [g]:	29419.90							
	UPHOLSTERY												

Cleco and rivet the parts together as shown.  
Rivets to be installed in the direction of the arrows.  
Only install rivets where indicated.



DISTRIBUTION LIST

INSPECTION	X
PARTS MAN.	
ASSEMBLY	X
COMPOSITES	
UPHOLSTERY	

APPROVAL STAMP:

NOTES :

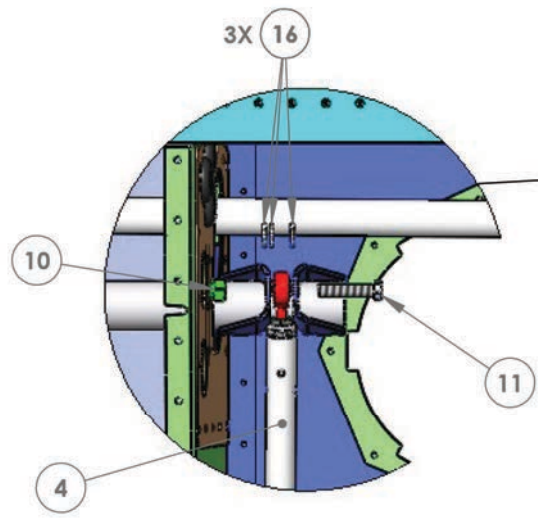
DRAWN: **Leon Nel**  
DATE: **2019/09/17**

PART NUMBER: **WG-ASS-003-R-F-0**  
DESCRIPTION: **Fast Wing Assembly 3 - Right**  
DRAWING No: **WG-ASS-003-R-F-0-A-3**  
MATERIAL: **-**  
Weight [g]: **29419.90**

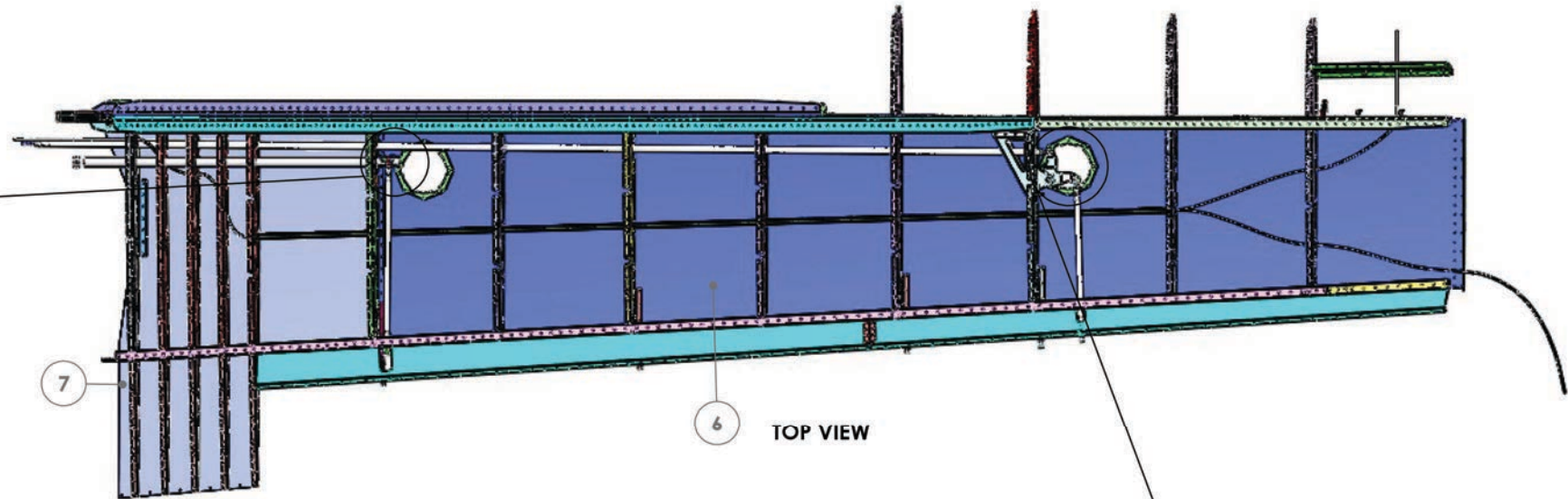
RFC No: **C0256**

SCALE: **1:10**  
PAGE:  
SIZE: **A3**

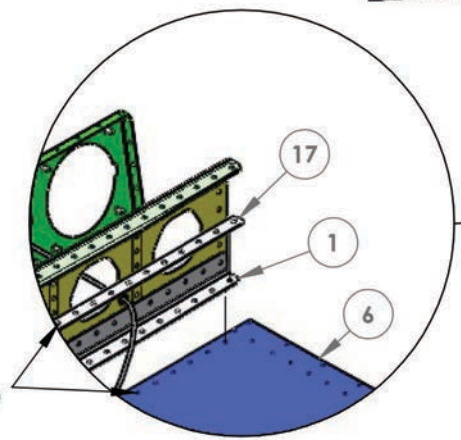




**DETAIL B**  
CONTROL ROD ATTACHMENT DETAIL  
SCALE 1: 3

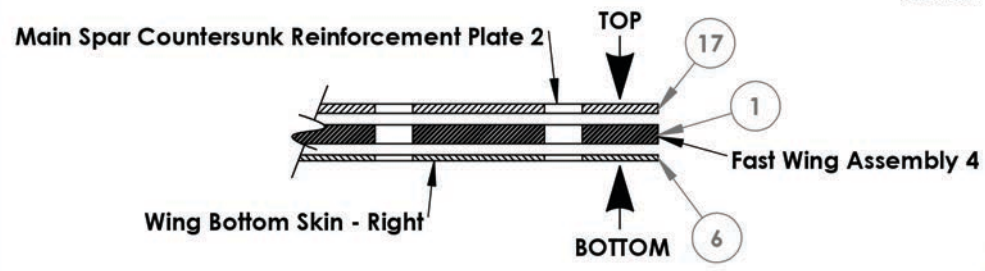


**6** TOP VIEW

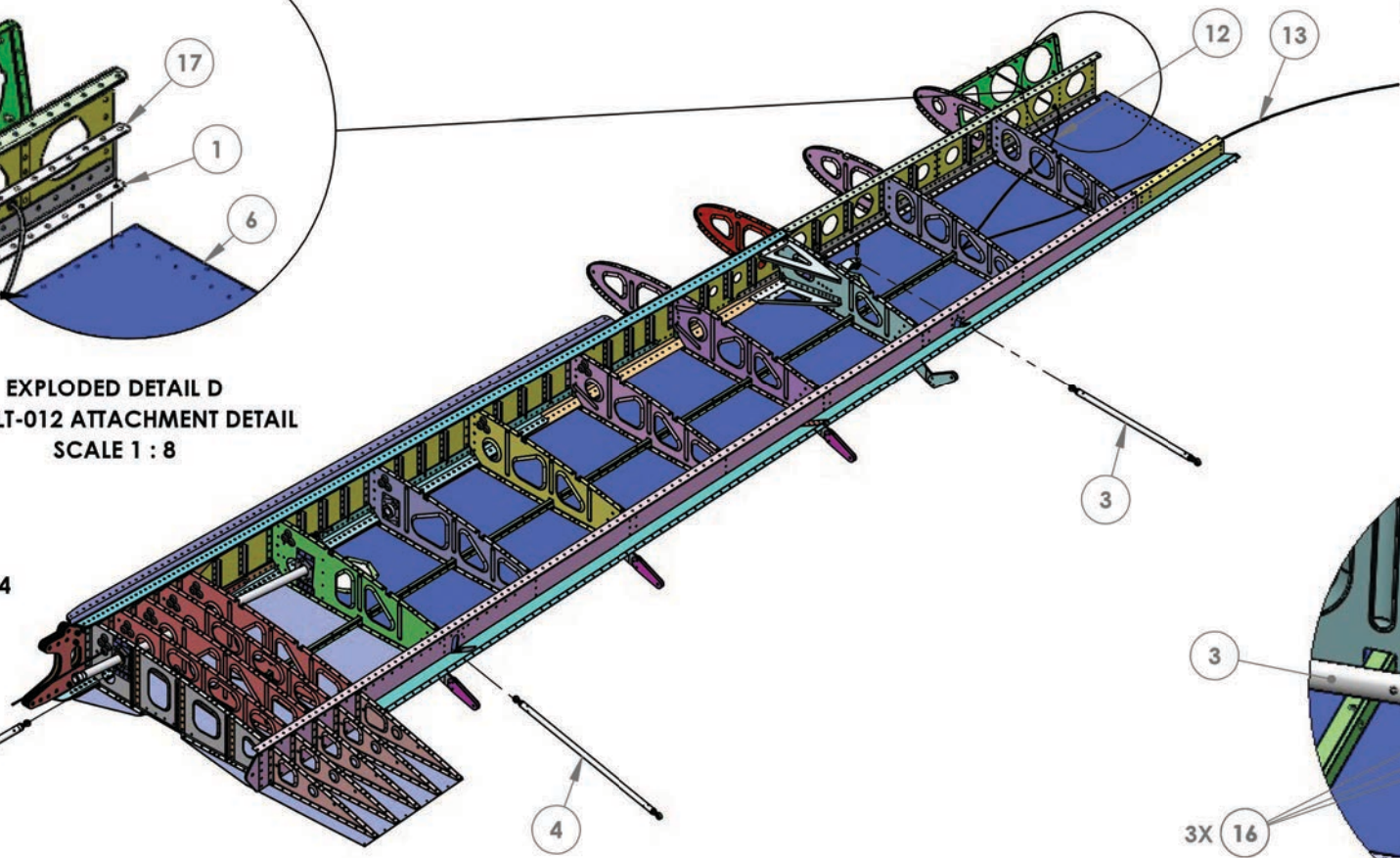


Cleco and then rivet part **6** from the bottom and part **17** from the top onto part **1** as shown in DETAIL E.

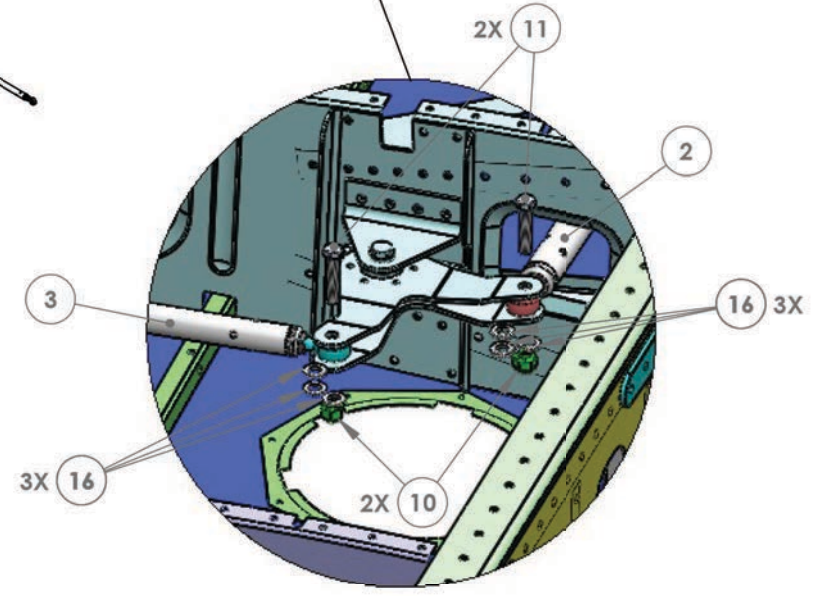
**EXPLODED DETAIL D**  
WG-PLT-012 ATTACHMENT DETAIL  
SCALE 1 : 8



**EXAMPLE OF**  
WG-PLT-012 AND WING BOTTOM SKIN FITMENT



**STEP 5:**  
EXPLODED ISOMETRIC ILLUSTRATION



**DETAIL C**  
CONTROL ROD ATTACHMENT DETAIL  
SCALE 1: 3

DISTRIBUTION LIST

INSPECTION	X	APPROVAL STAMP:	NOTES :
PARTS MAN.			
ASSEMBLY	X		
COMPOSITES			
UPHOLSTERY			

DRAWN: **Leon Nel**  
DATE: **2019/09/17**

PART NUMBER: **WG-ASS-003-R-F-0**  
DESCRIPTION: **Fast Wing Assembly 3 - Right**  
DRAWING No: **WG-ASS-003-R-F-0-A-3**  
MATERIAL: **-**  
Weight [g]: **29419.90**



SCALE: **1:20**  
PAGE:  
RFC No: **C0256**  
SIZE: **A3**



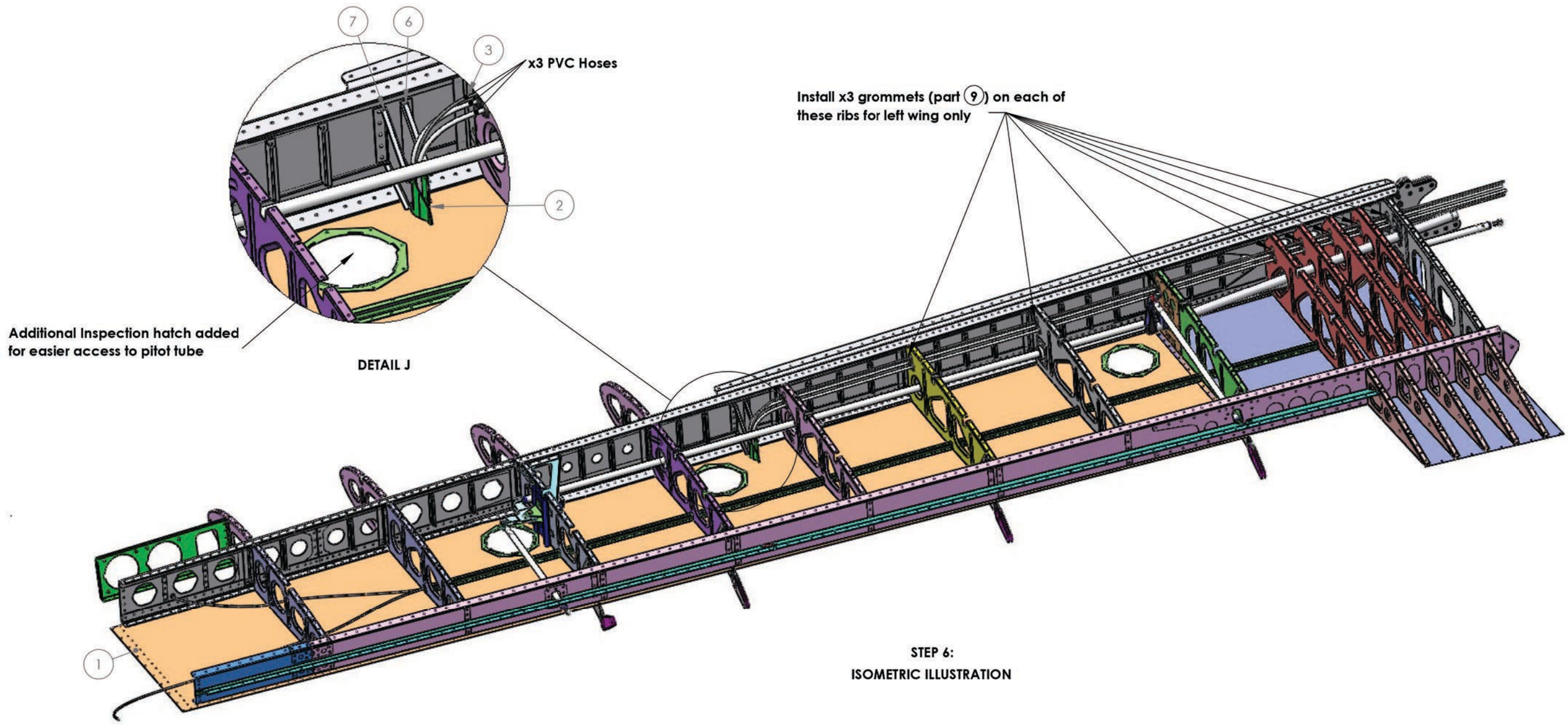
ITEM NO.	PART NUMBER	DESCRIPTION	QTY.
1	WG-SKN-104-C-F-2	Wing Bottom Skin - Left	1
2	WG-BKT-S17-C-X-0	Pitot Tube Mast Garmin - Assembly	1
3	WG-WIR-003-X-F-0	Pitot Tube Wire	3
4	HW-HSE-506-X-X-0	Thick Wall Clear PVC Hose 5mm	6
5	HW-RIV-142-X-X-0	Alu Domed Rivet 3.2x8mm	4
6	WG-BKT-004-C-F-0	Pitot Tube Bracket 4	1
7	WG-BKT-005-C-F-0	Pitot Tube Bracket 5	1
8	HW-GRM-003-X-X-0	6mm x 10mm x 13mm Grommet	1
9	HW-GRM-005-X-X-0	10mm x 12mm x 18mm Grommet	28
Push rods, eyebolts and hardware will be supplied with finishing kit			

**Wig wag lights:**

Wig wag option with the standard landing lights, does not require additional wires in the wing.  
 Aveo Wig wag option, requires 4 additional wires in each the wing (extra's kit for Aveo Wig wag lights)

**The heated Pitot tube (Not standard)**

Unregulated - Requires 2 extra wires (12 AWG Milspec teflon wire - EC-WIR-112-X-X-0).  
 Regulated - Requires: 2 extra wires and a new inspection hatch (12 AWG Milspec teflon wire - EC-WIR-112-X-X-0).



DISTRIBUTION LIST	INSPECTION	X
	PARTS MAN.	
	ASSEMBLY	X
	COMPOSITES	
	UPHOLSTERY	

APPROVAL STAMP:

NOTES : **LEFT WING ONLY.**

DRAWN: **Leon Nel**  
 DATE: **2019/09/17**

PART NUMBER: **WG-ASS-003-L-F-0**  
 DESCRIPTION: **Fast Wing Assembly 3 - Left**  
 DRAWING No: **WG-ASS-003-L-F-0-A-3**  
 MATERIAL: **-**  
 Weight [g]: **32396.85**

RFC No: **C0256**  
 SCALE: **1:15**  
 SHEET:  
 SIZE: **A3**

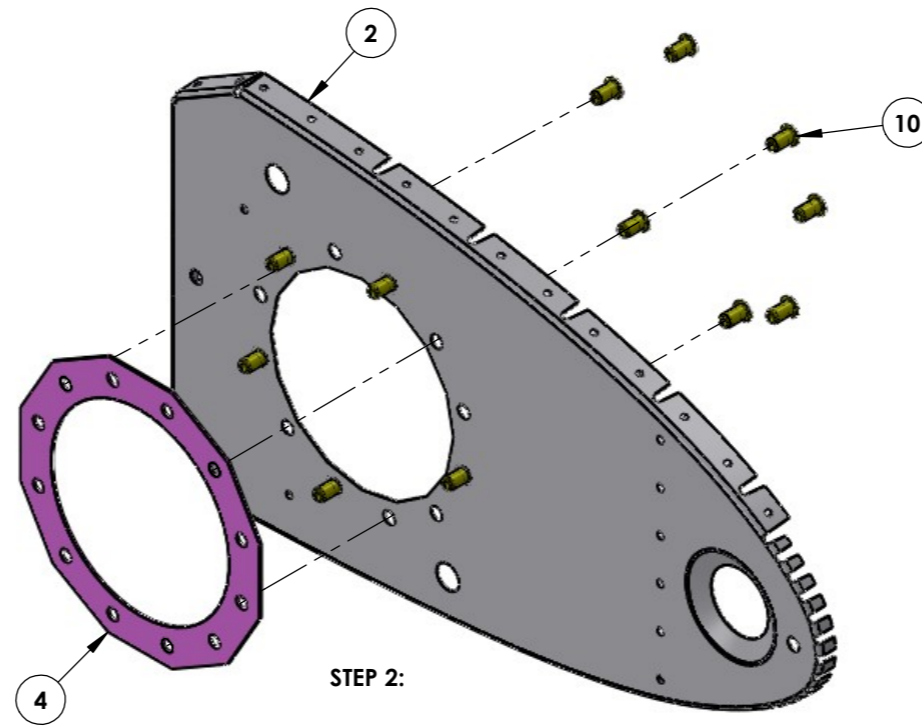
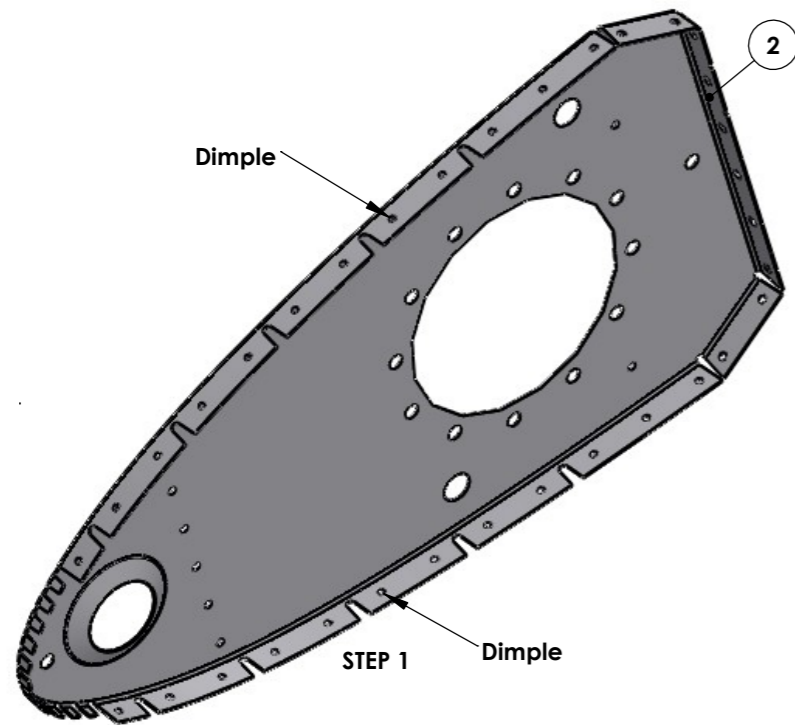


ITEM NO.	PART NUMBER	DESCRIPTION	QTY.
1	WG-CLM-002-X-F-0	Fuel Line Feed Fitting Clamp	1
2	WG-RIB-202-R-F-2	Fuel Tank Rib 202 - Right	1
3	WG-CLM-001-X-X-0	Return Fuel Line Fitting Bracket	1
4	WG-PLT-007-X-A-1	Backing Plate - Fuel Sender Mount Plate	1
5	WG-GAS-001-X-A-0	Fuel Sender Cork Mounting Gasket	1
6	WG-PLT-005-X-A-0	Fuel Sender Mount Plate	1
7	WG-BKT-009-X-A-0	Fuel Level Sender Mount Bracket	1
8	WG-TUB-S07-X-X-0	3/8" Inlet Tube (with nut and wiremesh)	1
9	HW-FTG-310-X-X-0	AN6 90° bulkhead flare, nut & 2 washers.	2
10	HW-RNM-400-X-X-0	M4 Rivnut Large Head	12
11	HW-MTW-045-X-X-0	M4 Fibre Washers	12
12	HW-MTB-416-X-X-1	M4 x 16mm Hex Bolt	12
13	IN-SEN-001-X-X-0	Fuel Level Sender	1
997	HW-RIV-342-X-X-0	3.2 x 8mm Alu Sealed Domed Rivet	2
998	HW-RIV-353-X-X-0	4 x 9.6mm Sealed Domed Rivet	2
999	HW-RIV-363-X-X-0	4.8 x 10mm Sealed Domed Rivet	2

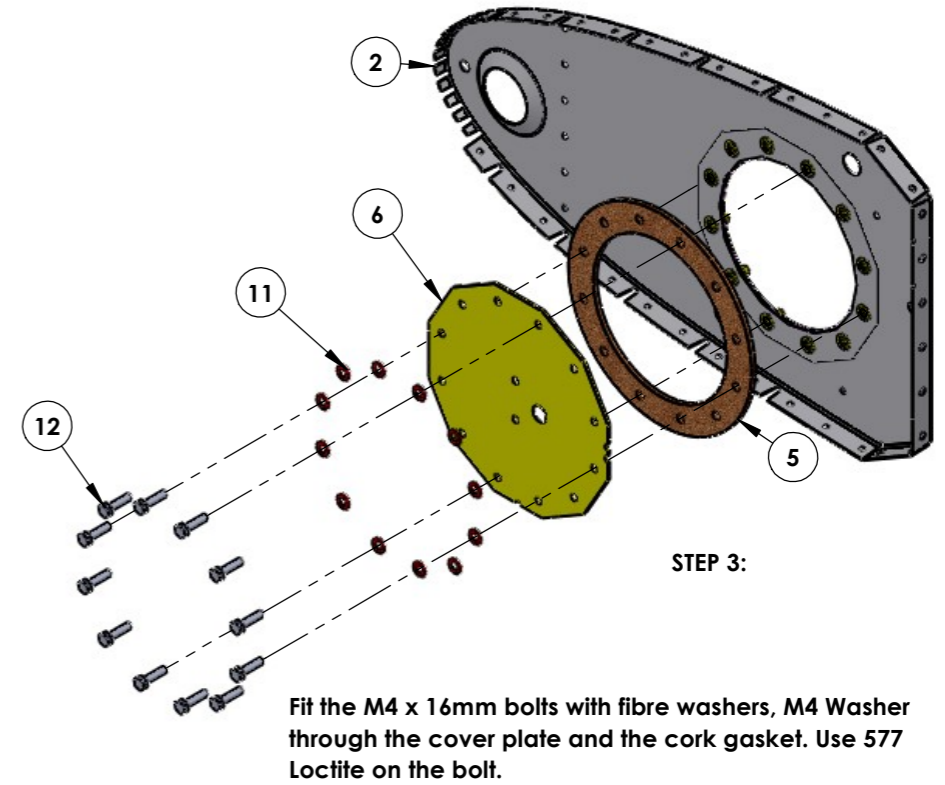
Dimple the parts as shown in the correct direction with the right size dimple dies.

Apply loctite 577 thread sealant onto the threads of all fittings before tightening them

Cleco and rivet the parts together as shown. Rivets to be installed in the direction of the arrows. Only install rivets where indicated.



Lightly abrade then degrease the areas around the holes where the heads of the rivnuts will be resting on the rib. When the fuel tank sealant is mixed to seal the fuel tank skins to the ribs, a thin bead of sealant should be applied around the head of each rivnut on the web of the rib.



Fit the M4 x 16mm bolts with fibre washers, M4 Washer through the cover plate and the cork gasket. Use 577 Loctite on the bolt.

DISTRIBUTION LIST	INSPECTION	X	APPROVAL STAMP:	NOTES : <b>RIGHT HAND SHOWN, LEFT HAND ASSEMBLED OPPOSITE</b>
	PARTS MAN.			
	ASSEMBLY	X		
	COMPOSITES			
	UPHOLSTERY			

DRAWN: <b>TEBOGO T</b>	PART NUMBER: <b>WG-RIB-S22-R-F-0</b>	SCALE: <b>1:5</b>	
DATE: <b>2019/0/11/04</b>	DESCRIPTION: <b>Assembly - Fuel Tank Rib 2, Right</b>	PAGE: <b>1</b>	
	DRAWING No: <b>WG-RIB-S22-R-F-0-A-4</b>	SIZE: <b>A3</b>	
	MATERIAL: <b>-</b>		
	Weight [g]: <b>-</b>		