



**THE AIRPLANE FACTORY (Pty) Ltd**, Registration no 2002/022837/07  
Hangar 8 Tedderfield Airpark, Nettleton Road, Eikenhof, 1872, Johannesburg South  
PO Box 308, Eikenhof, 1872, South Africa. Tel: +27 (0) 11 948 9898 Fax: +27 (0) 86 632 4493  
E-mail: [sales@airplanefactory.co.za](mailto:sales@airplanefactory.co.za) Web: [www.airplanefactory.co.za](http://www.airplanefactory.co.za)  
Approved Maintenance Organisation AMO1264 Manufacturing Organisation M677

## SERVICE BULLETIN

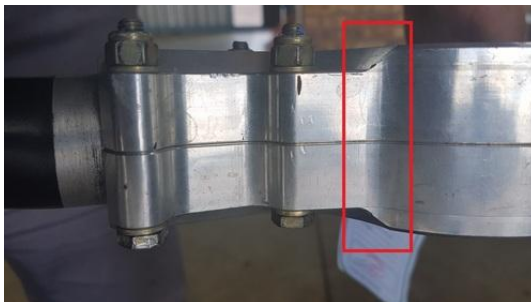
#008

Page 1 of 2

**The Airplane Factory (Pty) Ltd considers compliance with all Service Bulletins mandatory.**

**Note - an incorrect version of this Service Bulletin appeared for approximately 4 hours (from 1149Z to 1530Z on 8 November 2016) on the website of The Airplane Factory (Pty) Ltd ([www.airplanefactory.co.za](http://www.airplanefactory.co.za)). This document is now in its corrected form.**

<b>TITLE:</b>	Inspection of propeller hub – ground adjustable Warp Drive propellers
<b>RELEASE DATE:</b>	10 November 2016
<b>EFFECTIVE DATE:</b>	10 November 2016
<b>REASON:</b>	Risk of failure of propeller hub in ground adjustable Warp Drive propeller systems fitted to Rotax 912 iS engines.
<b>DESCRIPTION:</b>	This Service Bulletin provides instructions for the removal of the propeller and hub for purposes of, and the inspection of, the propeller hub on ground adjustable Warp Drive propeller systems fitted to aircraft with Rotax 912 iS engines.
<b>MODELS AFFECTED:</b>	All Sling LSA and Sling 2 aircraft fitted with a Rotax 912 iS engine and a ground adjustable Warp Drive propeller.
<b>COMPLIANCE TIME:</b>	At each 100 hour or 12 month (annual-type) inspection.
<b>TYPE OF MAINTENANCE:</b>	Class 1 product maintenance – removal and inspection of propeller hub.
<b>EQUIPMENT &amp; PARTS:</b>	As per currently applicable aircraft maintenance and Warp Drive installation and maintenance manuals applicable to removal and fitment of ground adjustable Warp Drive propeller
<b>INSTRUCTIONS:</b>	<ol style="list-style-type: none"><li>1. Remove aircraft propeller and propeller hub in accordance with the currently applicable aircraft maintenance and Warp Drive installation and maintenance manuals.</li><li>2. Following removal of the propeller hub carefully inspect the hub for cracks using penetrant dye or other appropriate NDT test equipment, paying special attention to the areas indicated in the photograph below.</li></ol>



3. If no evidence of cracking is found, re-assemble and re-fit propeller hub, blades and spinner in accordance with the currently applicable aircraft maintenance and Warp Drive installation and maintenance manuals.
4. If any cracks are found, The Airplane Factory should be notified and the hub replaced prior to the aircraft being placed back into service.

**WEIGHT AND BALANCE INFO:** Negligible effect. Re-weigh where required in terms of applicable national regulation.

**REFERENCES:** Current revision of the aircraft maintenance manual  
Current revision of the Warp Drive propeller installation and maintenance manual

#### **NOTES –**

- This Service Bulletin does not affect any other maintenance applicable to Sling aircraft, or to ground adjustable Warp Drive propellers. It should be implemented in addition to all other applicable maintenance and inspection requirements.